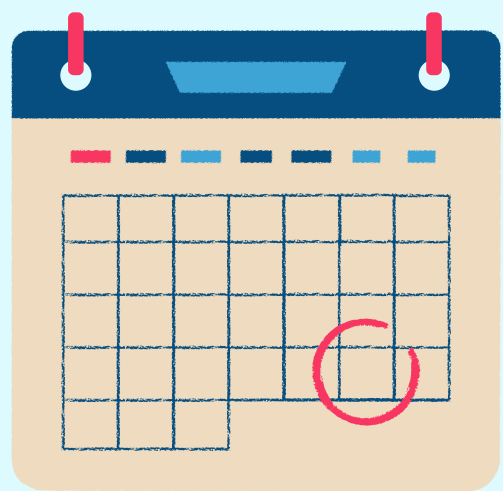


UDL Student Autonomy Strategies

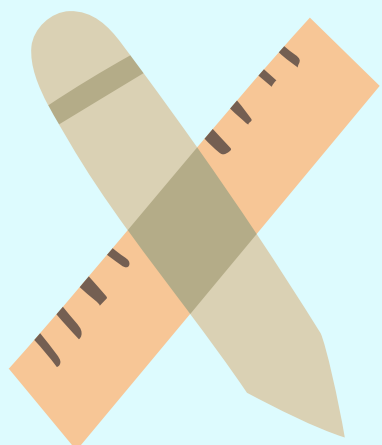
Multiple means of engagement



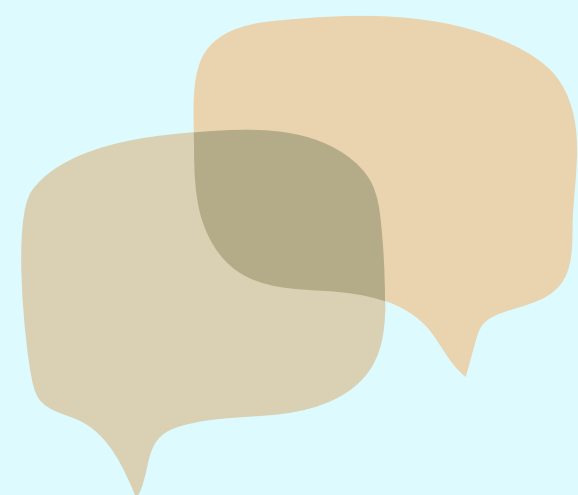
Publish an assessment calendar for all modules across the course at the start of the semester.



Share a course outline at the start of the semester.



Supply scaffolds for assignments to assist students to develop independent study skills.



Provide feedback on draft assignments so students know how they can improve.



Use a rubric for all assessments. Share this with the students when you give out the assignment brief.